

Difficulties in the industrial introduction of new effective hydrodesulfurization catalysts in the Russian Federation

R.R. Konoplin, N.K. Kondrasheva

Department of Chemical Technology and Processing of Utilities, Faculty of Raw Material Processing, St. Petersburg Mining University, Russia

Abstract: The article presents bibliographic knowledge of the world-scale inventions that formed the basis of HDS-catalysts for the development of various oil products. Extensive studies were conducted on optimization of carrier properties, active-phase chemical-mass composition, and basic technological parameters of transformation of initial components into active six-sided MoS₂ groups which are decorated by CoS₂ molecules, involving stages of desulfurization of oxide forms of the catalyst. Differences in the microstructure of Al₂O₃ supports derived from aluminum hydroxide of various genesis are described. Comparative possibilities of binding properties of aluminum hydroxide raw materials in laboratory tests and molding of waterpeptidized pastes are presented.

1 Introduction

In the oil refining sphere, the catalytic hydrotreating processes, or the so-called refining of crude raw materials, are of paramount and fundamental importance, since they significantly reduce the content of the following out-of-tolerance impurities in the products (sulfur, nitrogen, oxygen, and the metals V, Ni). However, due to the fact that the quality of oil produced in the world is constantly deteriorating, it is necessary to intensify hydrotreating processes and introduce highly effective catalysts (high activity, selectivity, and long cycle life).

The hydrodesulfurization (HDS) process is characterized by two parallel reactions: hydrogenolysis of organic sulfur compounds into hydrogen sulfide and hydrogenation of unsaturated hydrocarbons (linear or cyclic) [1,2]. The HDS process of light oil fractions takes place at a relatively low temperature ($T = 350\text{--}450^\circ\text{C}$) and can proceed at a low partial hydrogen pressure. Increasing the temperature and pressure allows to direct the reactions to alkane cracking and increase the sulfur yield within heteroatomic compounds such as dibenzothiophene.

The conventional initial step of the HDS process on the catalyst is the destruction of the C - S bond and the addition of hydrogen to the sites of destruction in the molecule.

The compositions of the active components HDS catalysts (Mo or W combined with Ni or Co) have been widely studied and patented since the middle of the last century. Mo and W oxides are semiconductors with p-conductivity, and their activity in redox reactions is due to the presence of free electrons on the surface of microcrystals, which are capable of

chemisorption and homolytic decomposition of organic molecules. Molybdenum sulfides are also semiconductors and their conductivity causes the cleavage reactions of C-S, C-N, and C-O bonds in heteroorganic compounds.

However, Mo and W are significantly less active in hydrogenating compared to Ni and Co. Therefore, the addition of these elements and their combination in the catalyst with Mo and W provides destruction of the organic molecule and hydrogenation in free bonds, i.e. bifunctional properties.

For the effective catalytic process, it is necessary to develop the number of active centers (potential points of contact of organic molecules with them) and transport the access of organic molecules to them.

The implementation of the last two conditions can be achieved by using a support that allows reducing the content of the active component to an optimum minimum due to the thin-layer distribution of Mo (W)-Ni (Co) metals and the required porous structuring. In this case, during the movement of reagents to the active centers of the catalyst, diffusion resistance will be completely absent or minimized.

It took many years to develop HDS catalysts as the final material to be loaded into the reactor. Research to improve catalyst technology and thin structure is ongoing worldwide and widespread.

Analysis of publications on this topic allows us to trace the world's developments and identify significant properties of the best modern industrial catalysts, as well as opportunities for their further improvement.

2 Teoretical part

2.1 Support

In the catalysts industry, reducing production costs while increasing their activity is a top-priority objective set for developers. This is possible with mesoporous active supports such as aluminum and silicon oxides. The following properties are required for HDS catalyst supports:

1. High mechanical strength to reduce catalyst wear during operation as defined by GOST 21153.2-84 [3,4,5,6,7].

2. Large surface area for the acceleration of active phases in the interaction with organo-sulfur reagents [3,8].

3. The availability of acid sites to improve active metals dispersion [3,7,9].

4. Reducing the strength of the metal-support bond to facilitate the reduction and sulfidation of the active phases.

The research of the support properties has started over 40 years ago. In earlier works, dozens of commercial Al_2O_3 support grades were tested: Ketjen SK-300 with $S_{\text{BET}} = 192 \text{ m}^2/\text{g}$ [10], Girdler T-126 with $S_{\text{BET}} = 188 \text{ m}^2/\text{g}$ [11], $\gamma\text{-Al}_2\text{O}_3$ Degussa with $S_{\text{BET}} = 105 \text{ m}^2/\text{g}$ [12], JCR-AlO-7 with $S_{\text{BET}} = 180 \text{ m}^2/\text{g}$, $\gamma\text{-Al}_2\text{O}_3$ Axens with S_{BET} from 90 to $300 \text{ m}^2/\text{g}$ [13,14]. Along with those, laboratory auxiliary support samples based on different types of aluminum hydroxides [15] and various molding methods (extrusion and dropping) with the addition of various components (SiO_2 , TiO_2 , CeO_2 , ZrO_2) [16] were obtained. The range of structural properties was the following: S_{BET} from 100 to $640 \text{ m}^2/\text{g}$, and total pore volume from 0.16 to $2.71 \text{ cm}^3/\text{g}$ [17,18,19,20,21,22]. The tested aluminum hydroxides were derived from precipitated sodium aluminates, alumina obtained using sol-gel technology from Catapal A Pural SB1 aluminum-organic compounds, and the product of gibbsite thermochemical activation.

According to the activity test results of Mo-Ni and Mo-Co catalysts samples obtained from the described supports, it was concluded that γ -Al₂O₃ supports with S_{BET} from 240 to 340 m²/g and total pore volume from 0.55 to 0.80 cm³/g allows 90-98% of sulfur removal efficiency.

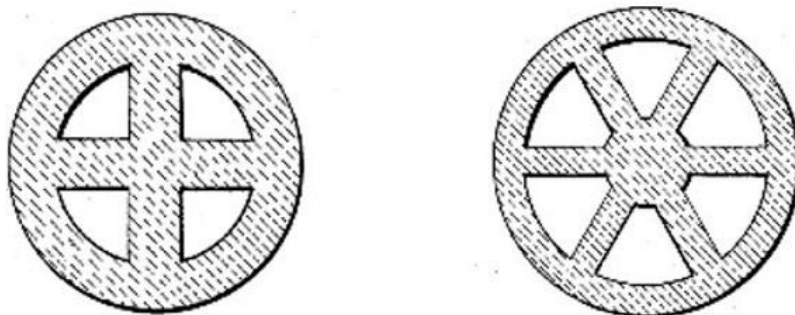


Fig. 1. Catalyst support forms of extrudates (Carmo J. Pereira & Hegedus, 1985).

However, the difficulty in specifying alumina as a feedstock to supports large-scale production, in addition to the demand for high structural characteristics, is all

about binding properties and formability. To increase the geometric contact surface of liquid hydrocarbons contact surface with the surface of the catalyst, the various forms of granulated spheres, cylinders, rings, and extrudates of complex shapes with low packed density were designed. In this case, it was necessary to ensure the formation of granules with external diameter ≤ 6.5 mm, S_{BET} ≥ 100 m²/g, $\sum V_{\text{pores}} \geq 0.5$ cm³/g, and with shape stability in the subsequent stages of metal activation and heat treatment [23]. The shapes of the granules are presented in Figure 1.

The configuration of granules in the form of a fan rotor initiated local turbulence of the gas-liquid mixtures, significantly increasing the mixing of reactants and their contact with the catalysts. However, the commercial production of these forms of supports was possible only using the low-surface raw materials, and as a result, led to low support properties, which are the following: S_{BET} ≤ 50 m²/g, $\sum V_{\text{pores}} \leq 0.3$ cm³/g. Such supports would require the application of an intermediate layer followed by activation of this layer with active catalyst components. This production method is multi-stage, and therefore more expensive.

Demetallization and desulfurization reactions occur in the HDS processes of petroleum products and limit each other depending on the order of interphase diffusion. For these types of reactions, the required granule size is determined according to the maximum conversion values for both types of reactions with the t/d ratio ranging from 0.10 to 0.30, and the most desirable value equals 0.15. The values are presented in Figure 2.

The “t” values are the wall thickness of the extrudate and “d” is the diameters of the granules. The value “a” is the amount of catalyst-conversion relationships. The “b” values are the ratios of the geometric surface of the catalysts to the reactor volume. The intercept point of “a” and “b” at t/d ratio equal 0.15 corresponds to the optimal extrudate with a 1.59 mm diameter and a wall thickness of 0.24 mm. These parameters were used in the commercial production of HDS catalysts. To increase the geometric treatment of the catalyst surface, a complex shape of tri- and quadralobe extrudates was used during the formation [23].

Along with optimizing the catalyst shape and grain size, great importance was given to the support porous structure; it was noted that a monodisperse with a predominant pore size of 7-10 nm was the most desirable. However, there is another approach with a preference for a bidisperse structure with pores of 2–5 nm (micropores) and 40–50 nm (mesopores), as well as intermediate pore sizes to connect micro- and mesopores [23].

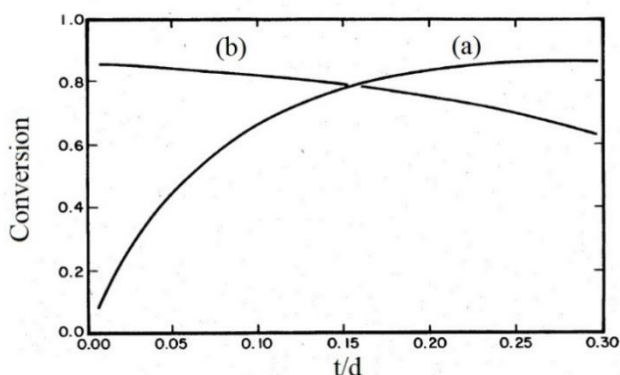


Fig. 2. Catalyst extrudates optimization treatment (Carmo J. Pereira & Hegedus 1985).

Micropores, which provide a high surface area (250-300 m²/g), are the main source of concentration of active catalyst centers, while the mesopores provide access to thereagents.

The formation of supports with a predetermined and controlled texture in the technological process is the most problematic aspect of the HDS catalyst industrial production.

It is also necessary to optimize the acid-base properties of the Al₂O₃ surface or, in other words, to make four- (Al^{IV}) and five-fold (Al^V) acid centers that could catalyze several chemical reactions. This problem can be solved in the process of the support body structure development. Such optimization can be implemented in the initial part of the alumina genesis. Also, the technological methods, such as adding promoters and co-components to the raw materials and the temperature regime, must be taken into account.

From this point of view, various nanostructured oxide materials and zeolites represent a particularly important starting material for the formation of new porous systems based on the aluminum oxide matrix with special properties (large pore volumes, surfaces, and high strength characteristics). Such supports make it possible to increase the concentrations of base metals, as well as the number of available promoters (steric and acidic) for dispersion modification [22].

The use of chelating agents or additives such as phosphorus and boron [24,22,16] increases the acidity of the support, at the same time it changes the distribution of hydroxyl groups on the surface, reduces the interaction of active metals with the support, leads to the multilayer structure [Co Mo S] - or [Ni Mo S] formation, and optimizes the efficiency of desulfurization.

Attempts were made to introduce boron and phosphorus in the industrial support structure [25,26,24], consequently, the acidity of the materials was increased, and the trend of reactions towards cracking, isomerization, and hydrogenolysis was noted.

For a long time, the role of carbon in HDS catalysts was a contentious issue: on the one hand, carbonization causes deactivation, and on the other, the presence of carbon during desulfurization of the compounds leads to improving catalyst activity [27]. The effect of carbon was studied on industrial catalysts. The supports (γ -Al₂O₃ with S_{BET} = 220 m²/g) were impregnated with C₂₀ gas oil before activation (by applying 12.3% wt. Mo and 3% wt. Co), followed by drying and coking. After sulfidation in a stream of H₂S + H₂, an increase in thiophene desulfurization activity of at least 30% was observed [27]. It was assumed that during the activation of the catalyst, the resulting atomic ensembles migrate to the surface, while carbon, present in the amount of 2-4% wt., prevents this migration by limiting layer growth in MoS₂ crystals and stabilizes the texture of the catalyst in general.

Nikul'shin [13] studied the effect of surface carbon in the support. The support was an Al₂O₃ matrix with a carbon coating obtained by pyrolysis (in N₂ at 600°C) of the final

component impregnated with a mixture of isopropanol and glycerin. Tests of Co-Mo and Ni-Mo catalysts in HDS from thiophene and dibenzothiophene on carbonized supports showed an advantage over similar tests on a plain Al_2O_3 support. The highest activity was obtained with a surface carbon content of 1.2-2.3% wt. The increased activity of the catalysts on carbonized supports was explained by a decrease in the interaction strength of the active phase ensemble (Co [Ni] MoS) with the support and the ability of supported carbon to accumulate hydrogen while facilitating its delivery to the centers of the active phase. Another function of carbon in such catalysts, according to the authors, is to change the morphology of the active phase. With an increase in carbon content above 4% wt., the catalyst activity decreased. It was suggested that the optimal carbon concentration on each support should be individual, depending on the size of its surface to obtain the required coating density.

Recently, there is high interest in using more stable crystalline and phase structures of Al_2O_3 as supports that were not studied in previous years. At high temperatures, tetragonal $\gamma\text{-Al}_2\text{O}_3$ supports were obtained due to the intergrowth of the initial $\gamma\text{-Al}_2\text{O}_3$ and $\delta\text{-Al}_2\text{O}_3$ pseudocubic crystals form. On these support samples, the catalysts with the same atomic density of molybdenum, promoted by cobalt, were prepared under different conditions and 4.6 - dimethyldibenzothiophene (4.6 - DMDBT) was tested in the model hydrodesulfurization reaction. A weaker interaction of the active CoMoS phase with $\delta\text{-Al}_2\text{O}_3$ support and higher activity was found, apparently, due to the formation of another, preferable for the reaction, energy model of active centers [14].

2.2 Catalyst

The development of modern commercial HDS catalysts and the determination of technological methods and parameters for their production was explained in details in a large number of different studies. In [28], the specification of the active phase of the chemical composition and its mass content on the support was studied. [29] in their works studied different methods of applying the active phase to the supports. In [30,31,32,33], the influence of promoters of various nature (steric, acidic) on the formation of the active phase and the determination of their quantity and the methods of introducing them into the catalyst were investigated.

As a result, the main components of the active part of the catalyst, Mo (W) 8-15% wt. and Co (Ni) 3-5% wt., were found to be non-alternative. $\gamma\text{-Al}_2\text{O}_3$ molybdenum catalysts with maximum dispersion are catalysts with monolayer coating of the support surface. However, there are two types of monolayers; the former monolayer corresponds to the geometric surface coating, and in the later monolayer molybdenum occupies all chemical surface vacancies. The formation reaction of a Mo bond with Al_2O_3 proceeds through OH groups, and it was determined that the maximum dispersion is achieved at 0.12 g of $\text{MoO}_3/100 \text{ m}^2 \gamma\text{-Al}_2\text{O}_3$, which is ~ 74% of the geometric monolayer. The amount of Mo exceeding this value remains as a free crystalline phase [12].

The conventional precursors of Mo and W are water-soluble ammonium paramolybdates and tungstates, while Co and Ni are crystalline nitric acid hydrates.

The predominant method of applying the active components on the support is impregnation with incipient moisture followed by drying and heat treatment of the contact mass at temperatures (110-120°C) - 500°C [18,8,16].

The use of various high-resolution analytical methods in the combined studies of the surface structures of HDS catalysts (XPS, HRTEM-EDX, EXAFS, DRS - UV-Vis) allows to evaluate the valence state of molybdenum, the sulfur distribution, and to determine the elementary active complex structure, which is the hexagonal layer of the MoS_2 nanocluster with Co atoms at the edges. This model of active cells is characteristic for type I and type II

catalysts defined by foreign developers for industrial hydrotreating catalysts. The type II catalysts are more active than type I due to the multilayer structure of MoS₂ hexagons, which are weakly bonded through oxygen [Mo-O-Al] to the support [18]. In type I catalysts this bond is stronger, as a result, the sulfidation process proceeds less efficiently, and this reduces the final activity.

The dispersion of the active phase and the interaction deterioration with the support are promoted by the chelating agents present, such as citric acid and other organic complexing agents and acid additives, such as boron and phosphorus [34,35,36].

Type II commercial catalysts are produced using co-impregnation with nitrile triacetic acid, which, at the stage of sulfidation, affects the rate of Ni sulfurization and decreases it in relation to Mo, which, as a result, reduces NiS₂ aggregation in reaction processes [37].

The final technological sulfidation stage, where the active surface structure is formed, can be carried out in the industrial reactor in several ways: gas-phase, liquid-phase, or combined. The way is selected according to the equipment capabilities at the industrial unit. Gas-phase sulfidation is carried out in a stream of hydrogen with the addition of 5-15% vol. H₂S with a gradual increase in catalyst temperature to 400-500°C [24,25,16]. The liquid-phase process runs with a solution of dimethyl sulfide in straight distillation gas oil with a sulfur content of 3.7% wt. in hydrogen with a gradual temperature rise from 30 to 320-350°C within 20 hours [37]. After the sulfidation step, a reagent is supplied to the catalyst.

With the expansion of the Russian Federation into the global market, the requirements for the quality of petroleum products in terms of sulfur content (less than 10 ppm), octane, and cetane numbers have significantly increased. The domestic catalysts could not meet the international requirements; thus, the predominant consumption of imported catalysts is taking place. The total load with imported catalysts at the 40 largest refinery plants is about 80%.

Currently, the leading developers and suppliers of HDS catalysts in the Russian Federation are the following international companies: Axens, Exxon Mobile, and Albemarle. Their products demonstrate high hydrotreatment activity (up to 99%), long service life, and maintaining the initial performance after regeneration.

The macro properties of the described catalysts are as follows: 3.5-4.0% Co; 13-15% Mo; S_{BET} = 245-265 m²/g; and the phase composition of the support is γ -Al₂O₃. However, the difference between imported and domestic catalysts is the fineness of complex-shaped (tri- and quadralobe, Figure 3a) granules with a 1.3-1.8 mm diameter.

According to the high quality of fine-grained complex-profile extrudates, the basis is pseudo-boehmite and boehmite aluminum hydroxides, which, in fact, are described in hydrodesulfurization catalysts patents [11,29].



Fig. 3. Catalyst support forms of extrudates: a – modern catalysts, b- domestic catalysts.

In the USSR, the pseudo-boehmite structure raw aluminum hydroxide derived from the ammonium nitrate deposition was produced at the only enterprise ‘AZOT’ (now OAO

“Catalyst”) in Dneprodzerzhinsk (Ukraine) and was intended for consumption in other than oil industries.

For the oil industry, catalysts in the Russian Federation in the form of extruded support have traditionally been produced and currently are manufactured based on deposited alumina of bayerite-boehmite phase composition. This Al₂O₃ support is a 2.8-3.8 mm cylinder (Figure 3b) with varying limitations of texture properties, and undesirable sodium impurities.

At present, in accordance with the program of import substitution in the oil industry, the issue of production of domestic competitive new-generation HDS catalysts production is urgent. A prerequisite for catalyst modernization is the use of domestic industrial aluminum hydroxide feedstock for production of the catalyst support base.

The available alumina raw materials are the following:

- Domestic production:
 1. aluminum hydroxide derived using the aluminum-nitrate high and low-temperature sedimentation with 60-70 % wt. moisture; Promkataliz, Ryazan;
- Imported raw materials:
 2. aluminum hydroxide derived using the acidic-nitrate sedimentation, Katalizator, Ukraine;
 3. aluminum hydroxide derived using the aluminum alkoxides hydrolysis Pural SBI, SASOL, Germany.

3 Results and discussion

The phase composition was conducted using the XRD and DTA analyzes. It was found that the set of samples # 2 and 3 have the purest phase composition. Only sample №3 contains a pseudo-boehmite phase with a small admixture of amorphous substance. The sample №3 Pural SBI also has a small amorphous fraction of totally well-crystallized boehmite. The aluminate precipitation alumina hydroxide is a bayerite-boehmite composition. The data is presented in Table 1.

Table 1. Alumina raw material phase composition.

Alumina raw material	Phase					
	Al(OH) ₃ Amorphous	Al(OH) ₃ Gibbsite	Al(OH) ₃ Bayerite	AlOOH·nH ₂ O O Poorly crystallized boehmite	AlOOH·nH ₂ O O Well crystallized boehmite	AlOOH·nH ₂ O Pseudoboehmite
Aluminum-nitrate sedimentation	6	No	15	79	No	No
Acidic-nitrate sedimentation	13	No	No	No	No	87
Pural SBI SASOL (Germany)	5	No	No	No	95	No

The comparative ability of alumina raw materials' binding properties is demonstrated in the process of laboratory testing during the obtaining and molding of pastes peptized only with water. The results presented in Table 2 show the agreement with the phase characteris-

tics of hydroxides, once again confirming the advantages of pseudo-boehmite and the negative effect of the heterogeneous phase composition. That influences both formability and the strength properties of the porous anhydrous Al_2O_3 structure.

Table 2. Alumina raw material comparative analysis.

Alumina raw material	Peptizing agent - water g H_2O / g Al_2O_3	Formability evaluation	Cylinder pellets properties $d = 4$ mm after 500 °C - 3 h.		
			S, m^2/g	$\sum V_{por}$, sm^3/g	Strength properties, kg/sm^2
Aluminum-nitrate sedimentation	1,22	Low-ductile paste, thixotropy, hard to form	200	0,88	12
Acidic-nitrate sedimentation	1,06	Solid paste, highly-ductile, very well-formed	320	0,63	84
Hydrolysis of aluminum alkoxides	1,23	Very solid, rubberlike, translucent, well-formed	230	0,48	24

4 Conclusion

According to the laboratory results, it was found that:

- The pseudo-boehmite phase provides the best formability properties of the paste during the extrusion process.
- Sample set #2 has the highest specific surface area and strength properties, which meets the requirements of modern oil-processing catalysts.
- The first series of samples are inferior in qualities due to the negative effect of the heterogeneous phase composition.

The doping of pore-forming additives in the structure of pseudo-boehmite will make it possible to obtain a bidisperse support system from which a highly efficient catalyst can already be obtained.

The next step is to conduct more in-depth studies using all technological methods to transform the available raw aluminum hydroxides into anhydrous porous systems to determine their potential competitiveness and ability to act as supports with improved texture and acid-base properties, and the final efficiency of new HDS catalysts should be confirmed through industrial-scale testing.

This work was carried out as part of the State Assignment "Development of scientific foundations of innovative technologies for processing heavy hydrocarbon raw materials into environmentally friendly motor fuels and new carbon materials with controlled macro- and microstructural organization of mesophase". The study was conducted with the involvement of the laboratory base of the Center for Collective Use of Saint Petersburg Mining University.

References

1. J. Anchita HYDRO-IMP Technology for Upgrading of Heavy Petroleum. *Journal of Mining Institute*, **224**, 229-234 (2017)
2. N. K. Kondrasheva, D. O. Kondrashev Modern hydroprocesses for the synthesis of high-quality low-viscous marine fuels. *Catalysis in Industry*, **9(1)**, 1-9 (2017)
3. Y. Ji et al. Promoting effects in hydrogenation and hydrodesulfurization reactions on the zirconia and titania supported catalysts. *Applied Catalysis A: General*, **257(2)**, 157-

- 164 (2004)
4. A. A. Pavlovich, V. A. Korshunov, A. A. Bazhukov, N. Ya. Melnikov Assessment of the strength of a rock mass in the development of deposits by an open method. *Journal of Mining Institute*, **239**, 502-509 (2019)
 5. G. M. Penkov, D. A. Karmansky, D. G. Petrakov Simulation of a fluid influx in complex reservoirs of Western Siberia. *Topical Issues of Rational Use of Natural Resources: Proceedings of the International Forum-Contest of Young Researchers. April 18-20. St. Petersburg. Russia*, 119 p. (CRC Press, 2018)
 6. A. G. Pevneva, G. Penkov, M. D. Bakiev On designing a computational experiment system for various engineering interpretations of a global optimization problem. *ARPJ Journal of Engineering and Applied Sciences*, **12**, 1219-1225 (2017)
 7. X. Wang et al. Synthesis of NiMo catalysts supported on mesoporous Al₂O₃ with different crystal forms and superior catalytic performance for the hydrodesulfurization of dibenzothiophene and 4,6-dimethyldibenzothiophene. *Journal of Catalysis*, **344**, 680-691 (2016)
 8. L. Zhang et al. CoMo catalyst on zeolite TS-1 nanorod assemblies with high activity in the hydrodesulfurization of 4,6-dimethyldibenzothiophene. *Journal of Catalysis*, **359**, 130-142 (2018)
 9. I. Vázquez-Garrido et al. Effect of support on the acidity of NiMo/Al₂O₃-MgO and NiMo/TiO₂-Al₂O₃ catalysts and on the resulting competitive hydrodesulfurization/hydrodenitrogenation reactions. *Fuel*, **236**, 55-64 (2019)
 10. W. S. MILLMAN, M. CRESPIAN, A. C. CIRILLO, JR., A. W. K. HALL The Surface Chemistry of Reduced Molybdena-Alumina Catalysts. *JOURNAL OF CATALYSIS*, **60**, 404-416 (1979)
 11. R. H. Ebel, D. P. Spitzer, W. E. Bambrick *Hydrodesulfurization catalysts based on supports prepared from rehydratable alumina*, (USA, 1978)
 12. M. Del Arco et al. Surface species formed upon supporting molybdena on alumina by mechanically mixing both oxides. *Journal of Catalysis*, 48-57 (1993)
 13. P. A. Nikulshin Molekulyarnyj dizajn katalizatorov gidroochistky na osnove geteropolisoedinenij helatonov i zauglerozhennyh nositelej. *dis. ... dok. him. Nauk*, 50-75 (Samara, 2015)
 14. D. Laurentiet al. Intrinsic potential of alumina-supported CoMo catalysts in HDS: Comparison between γ c, γ t, and δ -alumina. *Journal of Catalysis*, **297**, 165-175 (2013)
 15. V. M. Sizyakov, V. Y. Bazhin, E. V. Sizyakova Feasibility study of the use of nepheline-limestone charges instead of bauxite. *Metallurgis*, **59(11)**, 1135-1141 (2016)
 16. A. Tanimu, K. Alhooshani Advanced Hydrodesulfurization Catalysts: A Review of Design and Synthesis, *Energy and Fuels*, **33(4)**, 2810-2838 (American Chemical Society, 2019)
 17. R. Geoffrey, M. K. Wilson *US Patent - Hydrodesulfurization catalyst and process for producing the same*, (USA, 1977)
 18. A. L. Dicks et al. A study of relationships between pore size distribution, hydrogen chemisorption, and activity of hydrodesulphurisation catalysts. *Journal of Catalysis*, **72(2)**, 266-273 (1981)
 19. J. Leyrer et al. Structure and surface properties of supported oxides. *Materials Chemistry and Physics*, **13(3-4)**, 301-314 (1985)
 20. H. Shimada et al. Support effect on the catalytic activity and properties of sulfided molybdenum catalysts. *Journal of Catalysis*, **110(2)**, 275-284 (1988)
 21. T. Kazushi Usui, K. O. Fujikawa *Catalyst composition for hydrodesulfurization of hydrocarbon oil and process for producing the same*, (1993)
 22. F. Rashidi et al. Ultradeep hydrodesulfurization of diesel fuels using highly efficient nanoalumina-supported catalysts: Impact of support, phosphorus, and/or boron on the

- structure and catalytic activity. *Journal of Catalysis*, **299**, 321-335 (2013)
23. C. J. Pereira, L. Hegedus. *Catalyst with high geometric surface area alumina extrudate and catalyst with high geometric surface area*, (USA, 1985)
 24. Rinaldi, N. et al. 2009. Preparation of Co-Mo/B₂O₃/Al₂O₃ catalysts for hydrodesulfurization: Effect of citric acid addition. *Applied Catalysis A: General*, **360(2)**, 130-136
 25. Usman et al. The effect of boron addition on the hydrodesulfurization activity of MoS₂/Al₂O₃ and Co-MoS₂/Al₂O₃ catalysts. *Journal of Catalysis*, **227(2)**, 523-529 (Academic Press, 2004)
 26. Usman et al. Effect of boron addition on the surface structure of Co-Mo/Al₂O₃ catalysts. *Journal of Catalysis*, **247(1)**, 78-85 (Academic Press, 2007)
 27. J. P. R. Vissers et al. Carbon-covered alumina as a support for sulfide catalysts, *Journal of Catalysis*, **114(2)**, 291-302 (Academic Press, 1988)
 28. O. V. Klimov et al. CoMo/Al₂O₃ hydrotreating catalysts of diesel fuel with improved hydrodenitrogenation activity. *Catalysis Today*, **307**, 73-83 (Elsevier B.V., 2018)
 29. T. N. Vdovina, A. S. Belyj, M. D. Smolikov Raspredelenie aktivnogo komponenta po poram raznogo razmera v strukture oksidnyh nositelej. *Kinetika i kataliz*, **31(4)**, (1990)
 30. T. Kamo *Method of preparing catalysts for hydrogenation of hydrocarbon oil*. (USA, 1993)
 31. A. Ishihara, M. Nomura, T. Kabe Hydrodesulfurization of Dibenzothiophene Catalyzed by Supported Metal Carbonyl Complexes (Part 2) Hydrodesulfurization Catalysts Prepared from Alumina-supported Anionic Ruthenium Carbonyls. *Journal of The Japan Petroleum Institute*, **37(3)**, 300-310 (1994)
 32. A. Ishihara, M. Nomura, T. Kabe Hydrodesulfurization of Dibenzothiophene Catalyzed by Supported Metal Carbonyl Complexes (Part 2) Hydrodesulfurization Catalysts Prepared from Alumina-supported Anionic Ruthenium Carbonyls. *Journal of The Japan Petroleum Institute*, **37(3)**, 300-310 (1997)
 33. S. Eijssbouts, L. C. A. Van Den Oetelaar, R. R. Van Puijenbroek MoS₂ morphology and promoter segregation in commercial Type 2 Ni-Mo/Al₂O₃ and Co-Mo/Al₂O₃ hydroprocessing catalysts. *Journal of Catalysis*, **229(2)**, 352-364 (2005)
 34. K. A. Nadeina et al. A Catalyst for Selective Hydrotreatment of Non-Prefractionated FCC Gasoline. *Kataliz v promyshlennosti*, **16(6)**, 57-64 (2016)
 35. V. V. Danilevich et al. Novel eco-friendly method for preparation of mesoporous alumina from the product of rapid thermal treatment of gibbsite. *Superlattices and Microstructures*, **120**, 148-160 (Elsevier, 2018)
 36. Y. V. Vatutina et al. Influence of the phosphorus addition ways on properties of CoMo-catalysts of hydrotreating. *Catalysis Today*, **329**, 13-23 (Elsevier, 2019)
 37. V. K. Holl Genesis i svojstva molibden alyuminievyh i rodstvennyh katalizatorov. Problemy sovremennogo kataliza. *Trudy mezhdunarodnoj konferencii pamyati G.K. Borenskova*, (Novosibirsk, 1988)