

The Design of The Monitoring Tools Of Clean Air Condition And Dangerous Gas CO, CO₂ CH₄ In Chemical Laboratory By Using Fuzzy Logic Based On Microcontroller

Slamet Widodo^{1,*}, M.Miftakul Amin², Adi Sutrisman³

^{1,2,3} Department of Computer Engineering, Politeknik Negeri Sriwijaya, Palembang, Indonesia

Abstract: There are many phenomena that human are exposed to toxins from certain types such as of CO₂, CO₂ and CH₄ gases. The device used to detect large amounts of CO, CO₂, and CH₄ gas in air in enclosed spaces using MQ 135 gas sensors of different types based on the three sensitivity of the Gas. The results of testing the use of sensors MQ 135 on the gas content of CO, CO₂ and CH₄ received by the sensor is still in the form of ppm based on the maximum ppm detection range of each sensor. Active sensor detects CO 120 ppm gas, CO₂ 1600 ppm and CH₄ 1ppm "standby 1" air condition with intermediate rotary fan. Active sensor detects CO 30 ppm gas, CO₂ 490 ppm and CH₄ 7 ppm "Standby 2" with low rotating fan output. Fuzzy rulebase logic for motor speed when gas detection sensor CO, CO₂, and CH₄ output controls the motion speed of the fan blower. Active sensors detect CO 15 ppm, CO₂ 320 ppm and CH₄ 45 ppm "Danger" air condition with high fan spin fan. At the gas level of CO 15 ppm, CO₂ 390 ppm and CH₄ 3 ppm detect "normal" AC sensor with fan output stop spinning.

1 Introduction

Currently, a major concern of scientists is global warming, largely due to huge emissions of carbon dioxide (CO₂). Considered as one of the main greenhouse gases inducing a warming climate, CO₂ concentration in the atmosphere is under special scrutiny of many weather services in the world. The program involves capturing samples of atmospheric air at the Assekrem station twice a week, using 2 special bottles of 1.5 litres. These bottles are then sent to the NOAA laboratory (Boulder-USA) to determine concentrations of major greenhouse gases: CO₂ in ppm, CH₄ and CO in ppm.[1]

In human life can not be separated from the Gas carbon monoxide Gas CO, Gas Carbon dioxide CO₂, and Gas Methane is CH₄ hydrocarbons. The odorless CO gas is very dangerous, Methane (Methane) is the simplest hydrocarbon in the form of gas. Pure methane is odorless, colorless, extremely flammable, asphyxian, non toxic and non corrosive. Burning one molecule of methane with oxygen will release one molecule of CO₂ (carbon dioxide). [2]

At certain depths below the earth's surface there are dangerous gases such as Carbon Dioxide (CO₂) and Methane gas (CH₄). While carbon monoxide gas (CO) can be produced from leakage or emissions of fuel used as a source of propulsion power from the generator set and room temperature. Third gas is very dangerous if accumulate in the room without air circulation is not good. Hazardous gases that accumulate will often be inhaled by the workers who are in the room. [4]

Health problems will arise if inhaled methane gas in high concentrations. The symptoms are oxygen deprivation, rapid breathing, increased pulse rate,

decreased muscle coordination, increased emotion, nausea, vomiting, loss of consciousness, respiratory failure, and death. [4]

To solve the above problem, it is necessary to design the toxic detector of toxic monoxide (CO) gas, Carbon Monoxide (CO₂) and Gas methane (CH₄) gas as human safety from poisoning. This research was built for gas leak detection tool CO, CO₂, and CH₄ which work using MQ-7 Sensor. The MQ-7 sensor is a gas sensor that can detect vehicle exhaust gases in air carbon monoxide (CO) gas. If the CO gas is detected, the MQ-7 sensor will provide input (insert) to the Arduino output of the microcontroller which has three types of outputs, Namely LCD display (Liquid Crystal Display), Motor Fan, and buzzer. LCD function information Gas CO, CO₂ and CH₄ in ppm quantities. The LCD is used to provide information on the occurrence of gas leak indoors when the sensor reads CO₂, and CH₄ through microcontroller. Exhaust Fan is used to neutralize air conditions in the room according to sensor readings against harmful gas gases in ppm. Fan motor rotation works based on fuzzy logic during low, middle, and high conditions. The larger the hazardous gas gases detected by the sensor in ppm size the microcontroller will send the information to the fan fan circuit with high conditions, as well as the low conditions the microcontroller will send the information to the fan at low speed. The fan driver is used to neutralize the condition of the room by removing air inside the room when it detects CO, CO₂ and CH₄ gas in the laboratory and workshop room in safe, standby, alert and danger conditions.

* Corresponding author: slametwidodo160573@gmail.com

2. Experimental details

Stages done in this research is by the method of planning and design. Here is the design of CO gas detector using ATMEGA 8535. [4]

This CO gas leak detector will work with the MQ-7 sensor and MQ 135 is a gas sensor that detects exhaust gases in the air of Carbon Monoxide (CO), Carbon Dioxide (CO₂) and Methane (CH₄) gas. If the CO, CO₂ and CH₄ gases have been detected then the MQ-7 sensor will give input (insert) to the microcontroller, then from the microcontroller has four outputs, LCD (Liquid Crystal Display), Driver Motor fan, and buzzer. LCD is used to display information readings of sensor detectors CO, CO₂, and CH₄. Driver The fan motor is used to drive the fan blades when it is detected CO, CO₂ and CH₄ gases inside the room during Safe, Standby1, Standby and danger so that space will be neutralized toxic gas content in ppm. LCD gives message information to the user that there is a toxic Gas leak.

The driver acts as an additional link to connect between the microcontroller with the buzzer and the Exhaust Fan. Explanation of the flow diagram of the CO gas detector in the laboratory room Figure 1. the following:

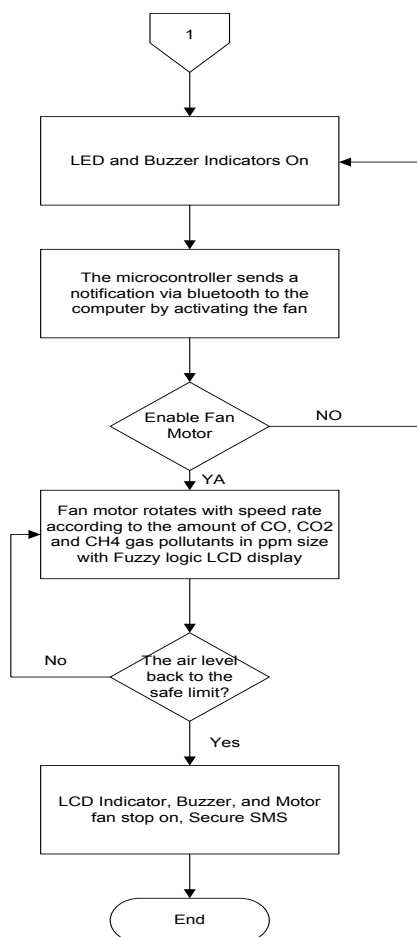
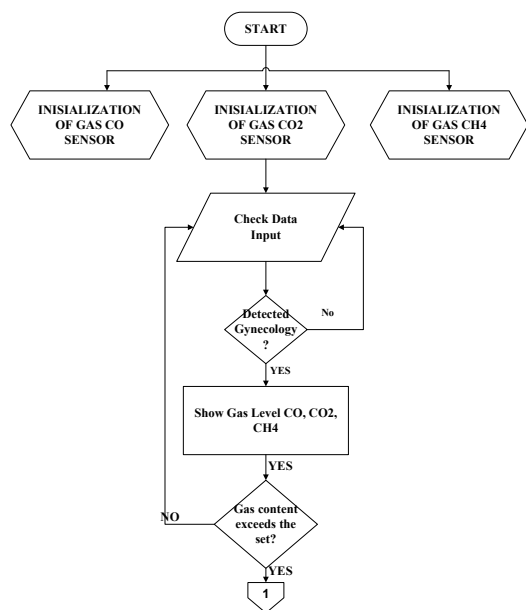


Fig. 1. Flowchart of How the Tool Works

The flow and work on the flow diagram is first to initialize the serial and then seen the input of the three gas sensors CO, CO₂, and CH₄ which will appear in gas levels. Then the sensor will work based on the smoke fumes detected by the MQ-7 and MQ-135 sensors. When the CO, CO₂ and CH₄ gases Active sensors detect CO 120 ppm, CO₂ 1600 ppm and CH₄ 1ppm air condition "standby 1" with medium spinning exhaust fan output. In active sensor detect CO 30 ppm gas, CO₂ 490 ppm and CH₄ 7 ppm "Standby 2" air condition with low rotating exhaust fan output. While the active sensor detects CO gas 15 ppm, CO₂ 320 ppm and CH₄ 45 ppm "Danger" air condition with High Spin Exhaust fan output. At the gas level of CO 15 ppm, CO₂ 390 ppm and CH₄ 3 ppm detected "normal" air conditioner sensors with the exhaust fan output stop spinning. To detect CO gas of 5 volt DC voltage sensor with ADC 0 - 1023 range for ADC value. For the detection of CO gas it is determined that the maximum value of the sensor to detect CO gas is connected to the microcontroller ADC at port D by 30 ppm [16]. From these provisions, the CO membership function for membership function is 0 - 30 ppm. So in order to scale the membership function accordingly ie 30 ppm then the ADC value must be divided by 34 which can be searched with the following equation: [5]

$$ADC \text{ divider value} = \frac{ADC \text{ Value} \dots [5]}{CO \text{ (ppm)}}$$

Information :

CO (ppm) = Levels maximum desired CO gas

ADC value = 1023

So, can we enter the value

ADC divider value = 1023 / (30 ppm)

ADC divider value = 34

The divisor value of ADC = 343.2 Metode Fuzzy

Rule evaluation process In this process the specified rules will be applied. Or it could be said function is to find the value of the fuzzy output of fuzzy input. Rule made to control the work of the sensor in detecting sensor in order to generate value in accordance with the expected output. The process is a fuzzy input of the process fuzzyfication included in a rule that has been created to serve fuzzy output. There are several methods of decision making in fuzzy logic Mamdani among which methods Figure 2.[2]. The following picture:

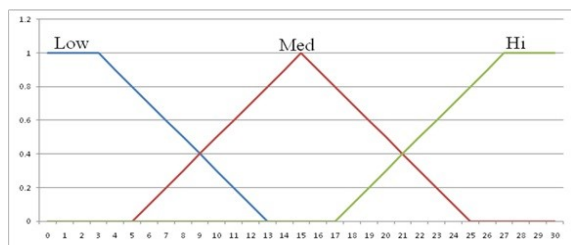


Fig. 2. Decision Methods Mamdani

Implications functions used in decision-making with Mamdani method by using MIN and in doing composition using MAX. The composition method is often called MAX-MIN. decision with Mamdani method. Here is a ten-rule evaluation that can be determined:

Table 1. Rule Evaluation

The following is stage of detection

1. If CO is low and CO₂ is low and CH₄ is low then condition is normal, blower OFF.
2. If CO is low and CO₂ is medium and CH₄ is low then blower is SPD_1.
3. If CO is medium and CO₂ is low and CH₄/CH₄ is low then blower is SPD_1.
4. If CO low and CO₂ is low and CH₄/CH₄ medium then blower is SPD_1.
5. If CO is medium and CO₂ medium and CH₄/CH₄ is high then blower is SPD_2.
6. If CO is medium and CO₂ high and CH₄/CH₄ is medium then blower is SPD_2.
7. If CO high and CO₂ is medium and CH₄/CH₄ is medium then blower is SPD_2.
8. If CO is not low and CO₂ high and CH₄/CH₄ is high then blower is SPD_3.
9. If CO is high and CO₂ is not low and CH₄/CH₄ is high then blower is SPD_3.
10. If CO is high and CO₂ is high and CH₄/CH₄ is not low then blower is SPD_3.

Is not low , mean high or medium
 SPD = Exhaust fan rte

3. Results and discussion

Based on tests conducted with test samples consisting of sources of pollutants ie gas originating from clean air, vehicle fumes, livestock manure and cigarette smoke for CO and CO₂ sensor testing, and gases derived from animal waste to compute the CH₄ sensor response, the following

Table 1. test for each input response.

No	Type of Gas	Clean air (ppm)	Vehicle emission (ppm)	Animal waste (ppm)	Cigarette smoke(ppm)
1	CO	2	1150	159	9206
		2	1132	156	9340
		3	1211	153	9604
		5	1256	154	9113
		7	1252	148	9480
Average value :		3.8	1200.2	154	9348.6
2	CO ₂	320	1750	390	5200
		300	1671	387	5440
		295	1455	391	5105
		310	1723	387	5201
		312	1559	391	5130
Average value :		370.4	1631.6	389.2	5215.2
3	CH ₄	1	90	70	25
		2	87	73	23
		1	89	71	24
		2	88	73	22
		1	98	72	21
Average value :		1.4	90.4	71.8	23

The result of the room condition test on the CO gas, CO₂ and CH₄ gases in the Graph using Fuzzy Logic Rulebase as described below:

1. High CO₂, CH₄ Low and CO High Standby conditions

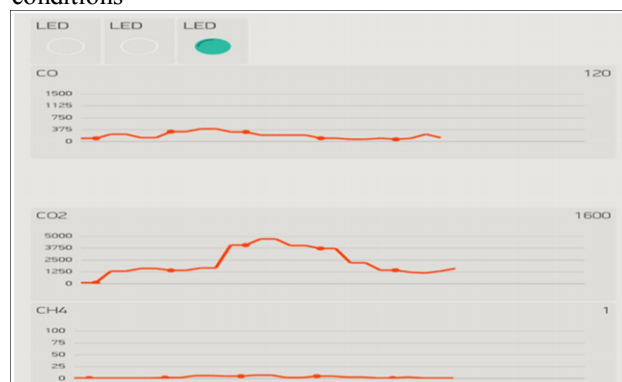


Fig 3. Measurement Results Gas CO, CO₂ and CH₄ High Standby conditions

2. Condition of CO₂ med, CH₄ Low and CO med standby output 2

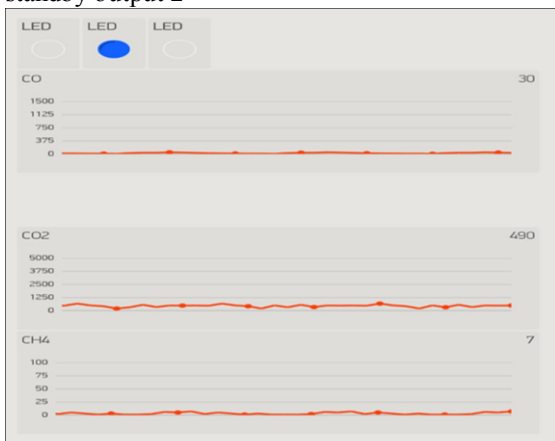


Fig 4. Measurement Results Gas CO, CO₂ and CH₄ Standby conditions

3. Condition of CO₂ med, CH₄ high and low CO output hazard

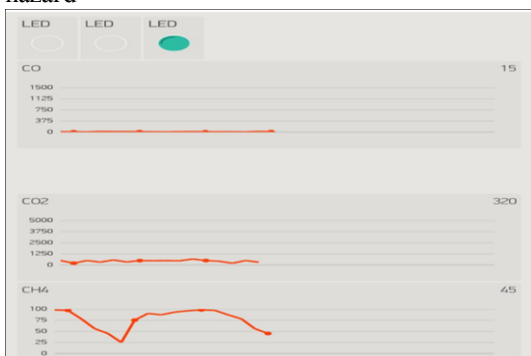


Fig 5. Measurement Results Gas CO, CO₂ and CH₄ hazard conditions

4. Low CO₂ conditions, Low CH₄ Low and low CO output are safe



Fig 6. Measurement Results Gas CO, CO₂ and CH₄ Safe conditions

4 Conclusion

In conclusion, this study shows that the test results of the system when the active sensor detects CO 120 ppm gas, CO₂ 1600 ppm and CH₄ 1ppm air condition "standby 1" with a medium spinning exhaust fan output. In active

sensor detect CO 30 ppm gas, CO₂ 490 ppm and CH₄ 7 ppm "Standby 2" air condition with low rotating exhaust fan output. While the active sensor detects CO gas 15 ppm, CO₂ 320 ppm and CH₄ 45 ppm "Danger" air condition with High Spin Exhaust fan output. At the gas level of CO 15 ppm, CO₂ 390 ppm and CH₄ 3 ppm detected "normal" air conditioner sensors with the exhaust fan output stop spinning.

References

1. H. Abderrahim, M. Berrebia, A. Hamou, H. Kherief, Y. Zanoun, K. Zenata. *J. Mater. Environ. Sci.* **2** (2) 94-103 (2011)
2. Andrian Dendy, *Computer Engineering Department of the Polytechnic of Sriwijaya. Palembang*, 34-36. (2013)
3. Hapsari, Chrismalia; Wilujeng, Susi Agustina. *Study of Carbon Dioxide Emissions (CO₂) and Methane (CH₄) from Waste Reduction Activity in Southern Part of Surabaya.* Environmental Engineering, ITS. Surabaya. 2010
4. Aldo, Aziz Putra,. *Work Build Clean Air Monitoring Tool and Harmful Gas CO, CO₂ and CH₄ Using Microcontroller.* (2016)
5. Sari Rahma, *Eka.Toxic Gas Leak Detection Equipment CO By Car Using Sensor Array with Fuzzy Controller.* Computer Engineering Department of the Polytechnic of Sriwijaya.Palembang, 36-37. (2012)
6. Indahwati, Elly; Nurhayati. *Design of Carbon Monoxide (CO) Gas Concentration Measurements Using Micro-Controller Based MQ-135 Gas Sensors With USART Serial Communications.* UNESA. Surabaya. (2012)
7. Nurrahmah; Prasetiawan; Suparno. *Gas Leak Detector System on LPG Tube.* UMS Surakarta. Surakarta. (2006)
8. Rofiq, Muhammad, Yusron, M. *Design of Lights Control and Monitoring Systems By Utilizing Bluetooth Technology on Android Smartphone.* STMIK ASIA. Malang. (2014)
9. Saputra, Andri, Febriansyah, Dwi, Kuswara, Haris. Volume **4**. Number 1. *Home Light Control Device Using Bluetooth Based Android.* TECHNOMETICS. (2014)
10. Siker Nas. *Carbon Dioxide Carbon Dioxide.* Badan POM RI. (2010)
11. Safrizal, Rino. *Global Warming.* <http://www.jejaringkimia.web.id/2010/12/mengenal-gas-metana.html> (accessed on March 28, 2016). (2010)
12. *Introducing Earth, Earth Atmosphere* http://www.trinitydemo3.net/boxford_classroom/view/article/171011/ (accessed on May 5, 2016).